



# EU forest-related policies

## State of play and views of European forest owners

Conference "*Organized forms of management in non-state forests*"  
Polish Association of Forest Associations (PZZL)

*Sven-Erik Hammar*  
*CEPF President*

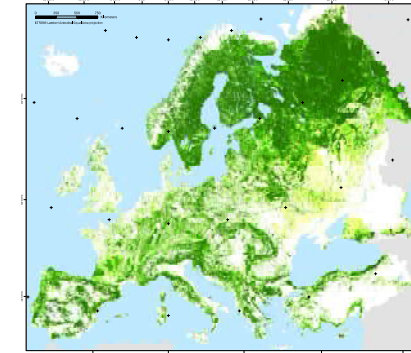
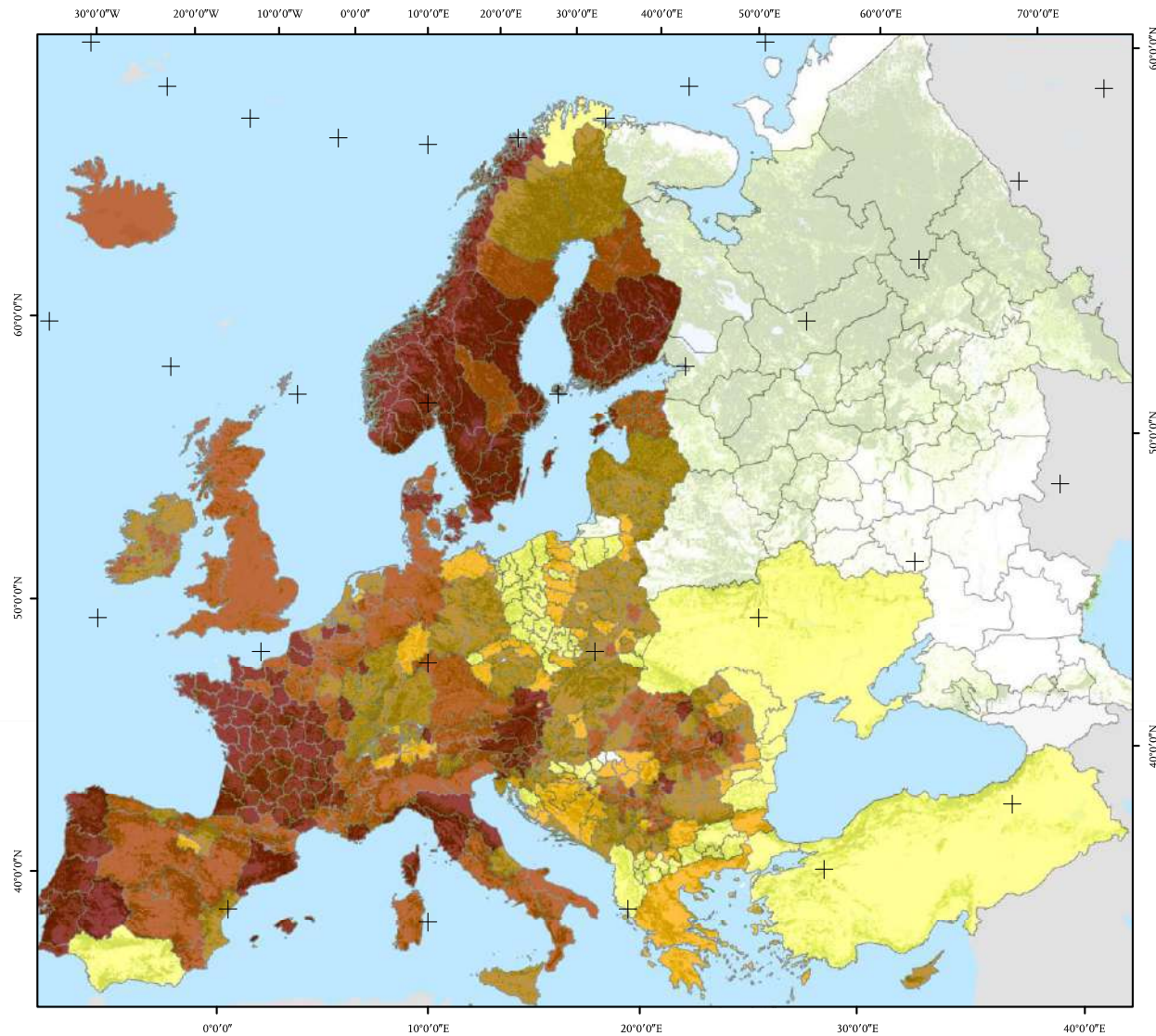


# European forest owners





# Forest owners in the European Union



FOREST MAP OF EUROPE

Recommended citation for the forest ownership map of Europe:

Pulla, P., Schuck, A., Verkerk, P. J., Lasserre, B., Marchetti, M. and Green, T. 2013. Mapping the distribution of forest ownership in Europe. EFI Technical Report 88. 92 p.

Forest ownership data

Compiled from official national and international information sources on private, public and other forest ownerships (publications, websites and information portals)

Private ownership

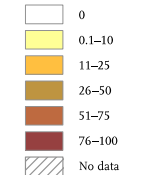
Forest owned by individuals, families, communities, private co-operatives, corporations and other business entities, private religious and educational institutions, pension or investment funds, NGOs, nature conservation associations and other private institutions. (FAO 2010)

References

FAO 2010. Global Forest Resources Assessment 2010. Terms and Definitions. Working Paper 144/E. 27 p. Food and Agriculture Organization of the United Nations, Rome.

Gunia, K., Päivinen, R., Zudin, S. and Zudina, E. 2012. Forest map of Europe. European Forest Institute. [http://www.efi.int/portal/virtual\\_library/information\\_services/mapping\\_services/forest\\_map\\_of\\_europe/](http://www.efi.int/portal/virtual_library/information_services/mapping_services/forest_map_of_europe/)

Proportion of forest land in private ownership (%)



0 250 500 750 Kilometers

ETRS89 Lambert Azimuthal Equal Area projection





# Forest owners in the European Union



**~15 millions  
EU forest  
owners**

**60% EU  
forest area**



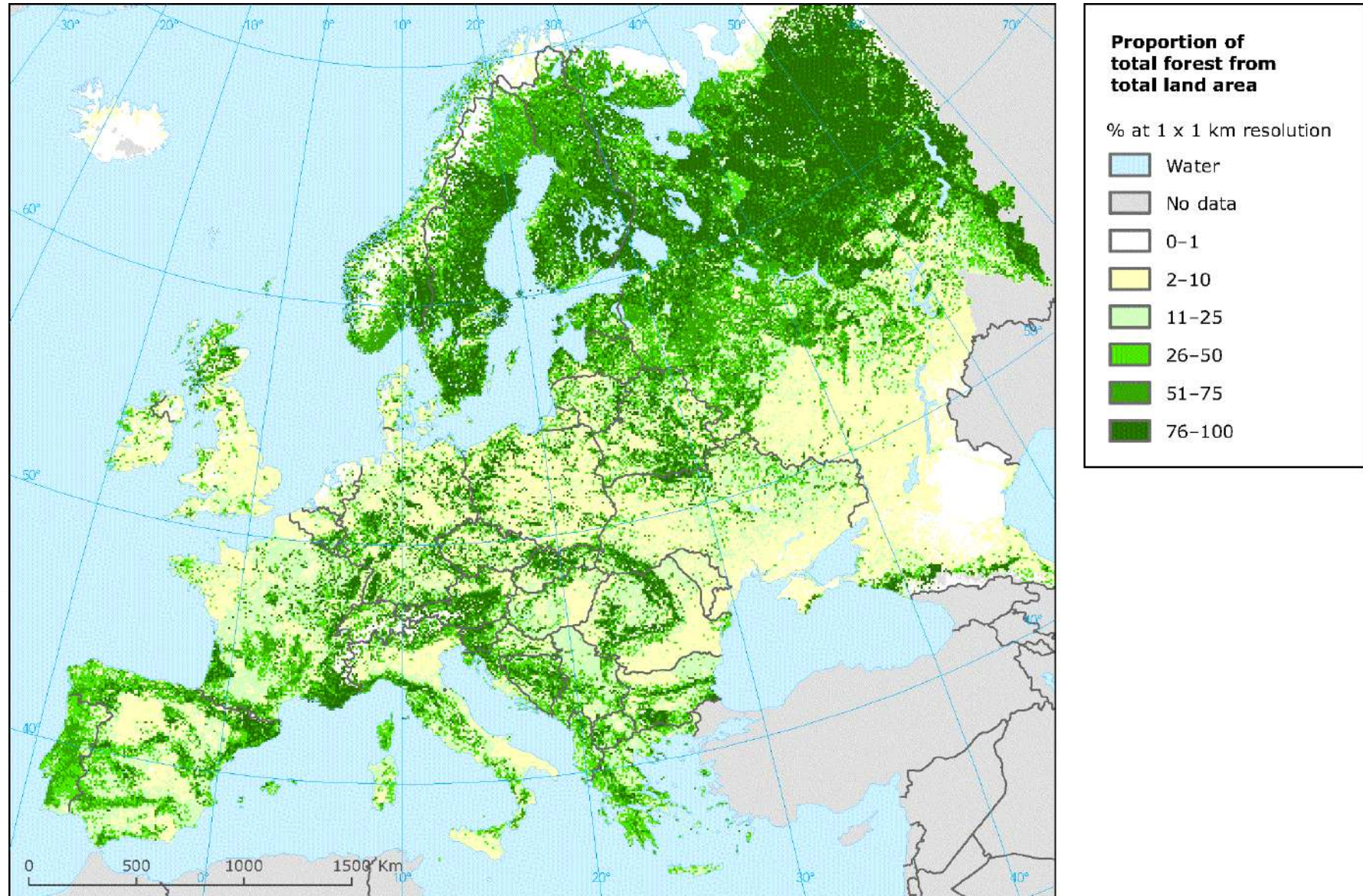


# European forests





# Diversity of EU forests ?









# Diversity of EU forests



# Diversity of EU forest owners



## Locally suited diversity of forest management





# Confederation of European Forest Owners





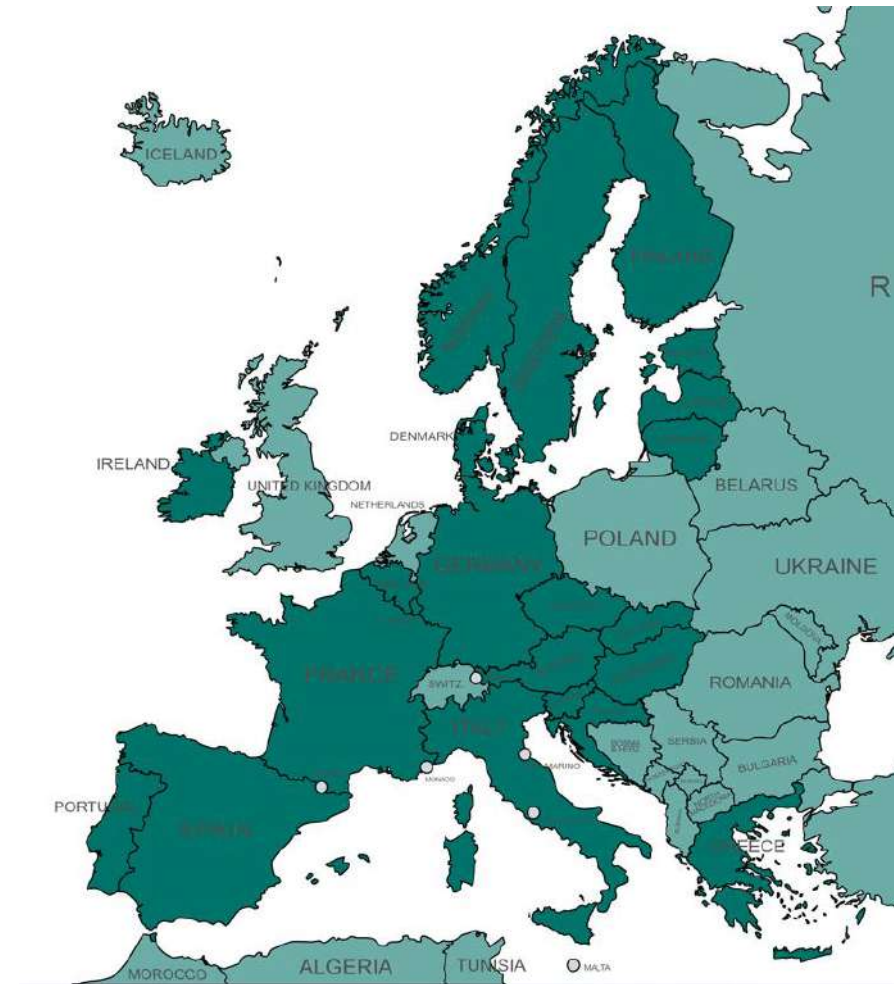
# CEPF Members

22 Ordinary members – national associations:



4 Associated members:

CONFI, Waldverband Österreich, UCFF,  
Familienbetriebe Land und Forst Bayern





# Meet CEPF Team

---



**Fanny-Pomme Langue**  
Secretary General



**Dajana Kojic**  
Office Manager



**Hélène Koch**  
Senior Policy Advisor



**Dániel Komlós**  
Policy Advisor



**Tim Hartl**  
Policy Advisor





# Bridging the gap between EU discussions and practices

Digesting EU current policy discussion



Bringing practice's experience





# European forests facts

---

- 182m ha (42% of EU land area)
- Growth in past 30 years: + 14 M ha, +8.5 bn m<sup>3</sup>
- 60% are private, 15M private forest owners
- 90% of EU wood industry supply originates from EU forests
- Forest-based sector: 8% of manufacturing added value in the EU and creates close to 4 million jobs





# EU forest- related policies





# Multiple expectations from society





# EU forest-related policies

1979

2023

DG GROW

DG FISMA

DG ENV

DG ENER

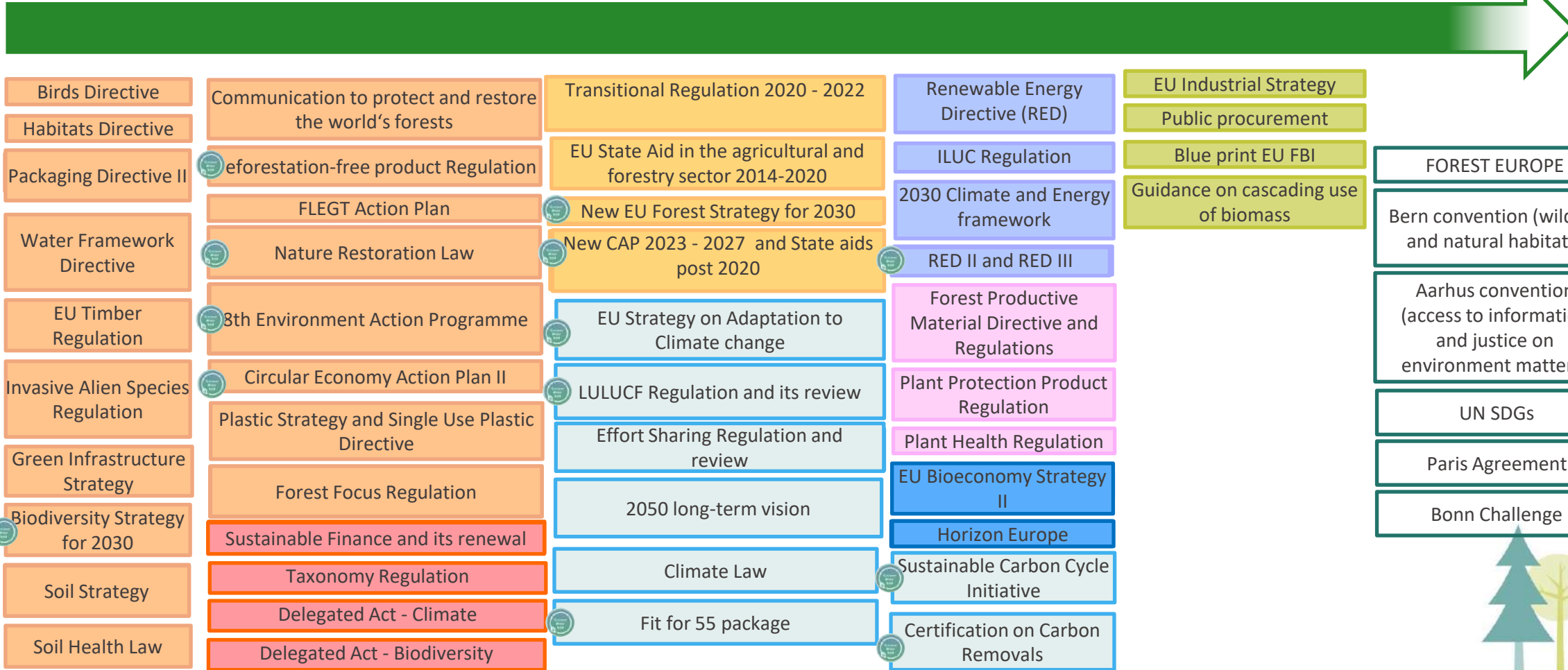
DG CLIMA

DG AGRI

INTERNATIONAL

DG SANTE

DG RTD





# The European Green Deal

---

- Climate change and environmental degradation are an existential threat to Europe and the world.
- Transform the EU into a modern, resource-efficient and competitive economy.
- No net emissions of greenhouse gases by 2050





# The European Green Deal (2019-2024)

Non binding
EU Biodiversity Strategy for 2030
EU Forest Strategy for 2030
EU Strategy on Climate Change Adaptation



new

new

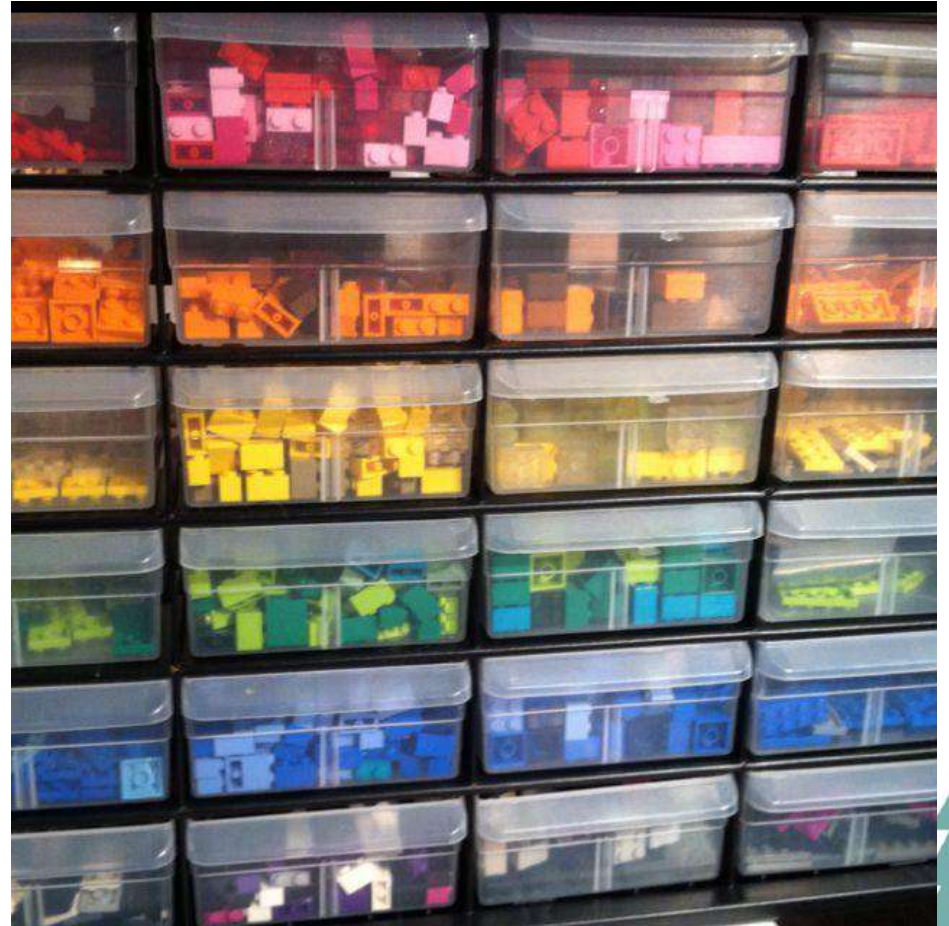
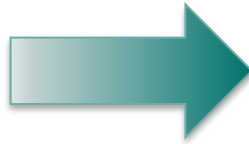
new

Announced for  
21st Nov 2023

Binding
Revised LULUCF Regulation
Revised Renewable Energy Directive (RED III)
EU Regulation on Deforestation (EUDR)
EU Regulation on Carbon Removals certification
EU Nature Restoration Law (NRL)
Implementation of EU Regulation on sustainable finance
EU law on EU forest monitoring and national long-term plans



# EU forest-related policies: achievement and limitations





# Impacts on forest owners





# Consequences

No direct forest management requirements but:

- More protection
- More sustainability requirements
- Political and legislative uncertainty



- Harvesting
- Area available for wood supply
- Products available



- Cost of management
- Administrative burden
- Motivation





# Our messages





# EU Forest Owners' messages ahead of EU elections

---



1. Enhance collaboration with Forest Owners
2. Support our work
3. A 'one size fits all' approach cannot work





**Thank you for you attention.**

[www.cepf-eu.org](http://www.cepf-eu.org)



Confederation of European Forest Owners